

News

It is with sadness that we record the death of the Chairman's mother Mrs Phyllis Edith Ault on the 14th May this year at the age of 95. Her husband John Kinder Ault took over the business from his father, the founder and Mrs Ault was a director and company secretary for many years. She had been unwell for some time.

IMPORTANT – PLEASE READ



Ministry of Justice Reforms

From the 31st July 2013 employers liability and public liability personal injury claims with a value up to £25,000 will be managed through an online system called the Claims Portal. The details are too extensive to reproduce in full here so for more information please visit our web site and click on the "news" tab and you will find the information in detail. We would however like to take this opportunity to point out your responsibilities within the process.

If you receive a Claim Notification Form (CNF), you must acknowledge receipt by e mail to the claimant or their representative **on the same day.**

However in doing so **you must not comment on liability.**

Please also e mail the CNF immediately to the Claims Department here at Aults as we need to pass it on to your insurers on the same day.

donna.king@ault.co.uk and / or sarah.kerr@ault.co.uk

If you have any questions call us on 0121 553 4791 or speak to your usual contact at Aults

Employer Reference Number – why and where from

Since 1st April 2012 insurance brokers have had to supply insurers with an Employer Reference Number (ERN) in addition to policy data when arranging Employer's Liability (EL) insurance. The ERN is used as a unique reference number enabling claimants and their brokers to search EL insurers. This means that more claimants or their representatives will be able to find their insurers in the event of a claim and will speed up the claims process. ERNs can be found on various documents such as P45s, P60s, P11Ds and sometimes on payslips. All businesses which employ people should have an ERN but if it cannot be found for some reason, contact should be made with HM Revenue and Customs who should be able to supply it.

Regulation changes

From the 1st April 2013 the newly formed Financial Conduct Authority took over the regulation of financial firms providing services to consumers in the UK including insurance brokers from the previous body the Financial Services Authority.



New web site

Our new web site which we referred to briefly in our Spring Newsletter is now up and running. If you haven't already seen it go to www.ault.co.uk and have a look.

You will find it modern, easy to navigate around and with content and information to help and advise you our clients. Some of the new pictures, banners and the logo are displayed here.



Local News

For many years now the much needed regeneration of West Bromwich Town Centre has been on the cards. At long last on Thursday 11th July 2013, the Tesco led 540,000 square feet development "New Square" opened to the public. As well as the Tesco Extra the shopping opportunities include Next, Primark, JD Sports, Bank, Outfit, Deichmann, Phones 4 U, and many more. The square also includes a five screen Odeon cinema, Prezzo, Harvester, Costa Coffee, Nandos and a chinese buffet. There are still several units to be let and so we look forward to even more in the near future.

And the really important news is that it is all just minutes (a couple of hundred yards) from our offices (pictured below).

Many of Aults staff visited the shopping centre on the opening day and all were very impressed with the new centre and the retail opportunities that it presents. So if you have cause to visit our offices in West Bromwich leave a few extra minutes to visit our "New Square" and experience our new modern shopping and leisure facilities. We are sure you will be impressed.



Office space available for rent

We currently have some office space available for rent in our building.

For those of you who have never visited us and don't know West Bromwich, we are situated in a town centre location just off the High Street, adjacent to the redevelopment of the town centre mentioned in more detail above. We are close to the Metro station giving easy and quick access to Birmingham and Wolverhampton, and only minutes away from the M5 and M6 motorways. If anyone is interested and wants some more information just give us a call.

Swimsure success story

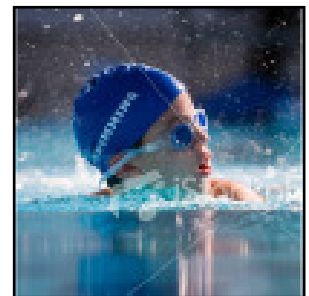
We are pleased to report that our specialised insurance scheme for swimming schools and clubs which we released towards the beginning of this year has been a great success. We have been handling swimming club insurance for many years and so we already have considerable experience and expertise in this field. That experience together with the new policy underwritten by Hiscox Insurance which offers extensive cover has meant that we have welcomed many new clients during the year.

For more information:-

0845 450 8020

www.swimmingclubinsurance.co.uk

E mail: enquiries@swimsure.co.uk



Puzzle Corner

In our Spring 2013 newsletter we asked you two questions: Name an English word with three "Y"s in it and what is the only English word to end in "mt"? There are several words with three "y"s in them but the most well known is "syzygy". The only English word ending with "mt" is "dreamt". The winning entry drawn out of the hat was from Caroline Sparks of Turtle Tots Ltd, one of many swimming school we insure. We sent her £25 of Marks and Spencer's vouchers as usual.

I took this photograph of an iconic building whilst out and about last year. Can you name the building? Answers via our web site as usual by the 31st August 2013. £25 worth of Marks and Spencer's vouchers will be sent to the first entry drawn out of the hat with the correct answer.



Kinder House, Lombard Street, West Bromwich, West Midlands, B70 8SD Phone: 0121 553 4791 Fax: 0121 500 5972

www.ault.co.uk e mail: enquiries@ault.co.uk

